

I HAVE HOPE

Sermon Notes Online @



YouVersion™

Pastor Dave Gudgel – “I Have Hope” – 1 Peter 1:3-5



I HAVE HOPE

Pastor Dave Gudgel – “I Have Hope” – 1 Peter 1:3-5



Which one are you?



1/2 FULL?



1/2 EMPTY?



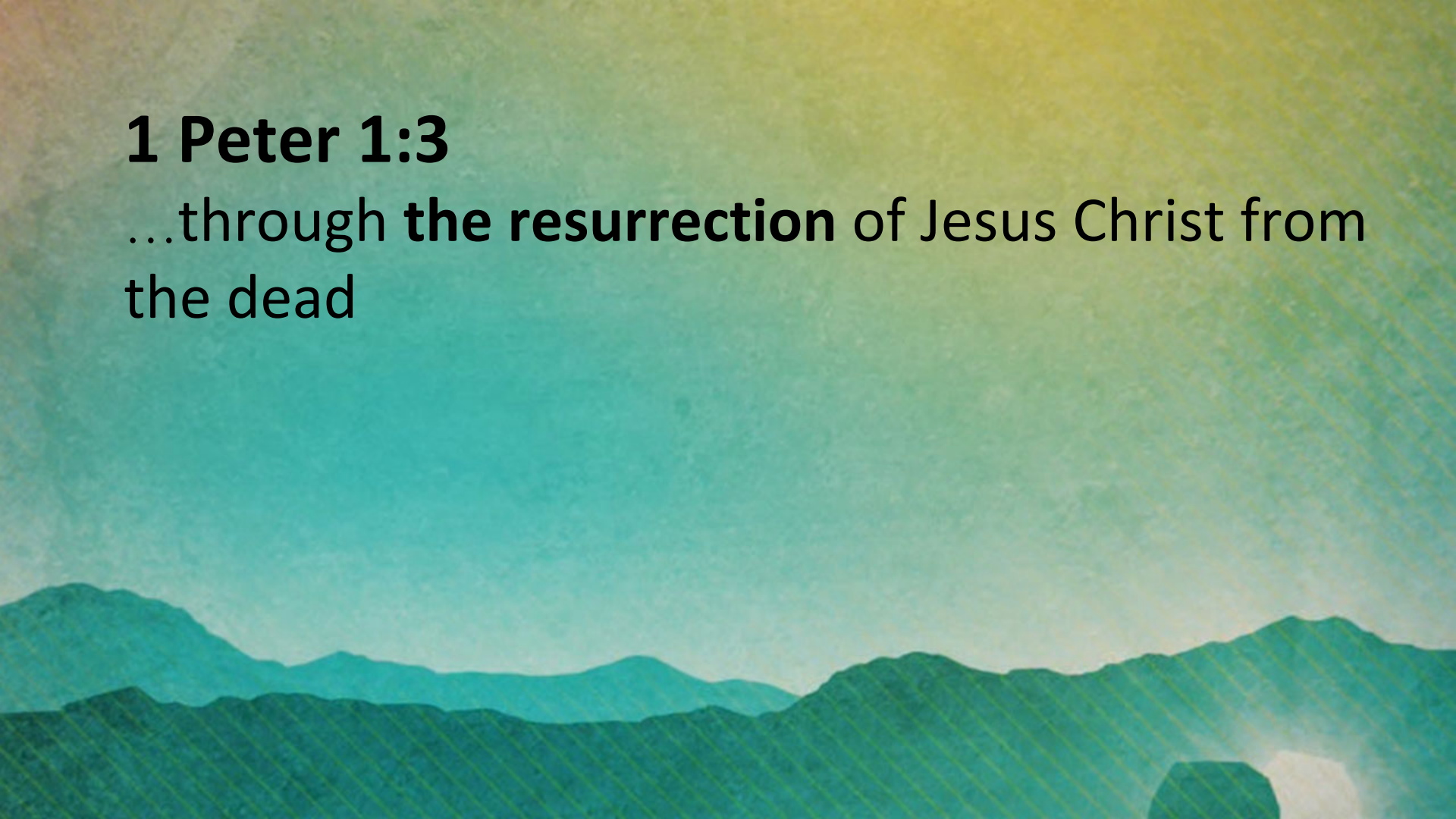
1 Peter 1:3

He has given us new birth into a **living hope** through the resurrection of Jesus Christ from the dead



1 Peter 1:3

...through **the resurrection** of Jesus Christ from the dead



SVPB

SILICON VALLEY
PRAYER BREAKFAST



“Coming to believe that
Jesus is the promised Messiah,
the Savior of the world,
is the best investment decision
I’ve made in my life.”



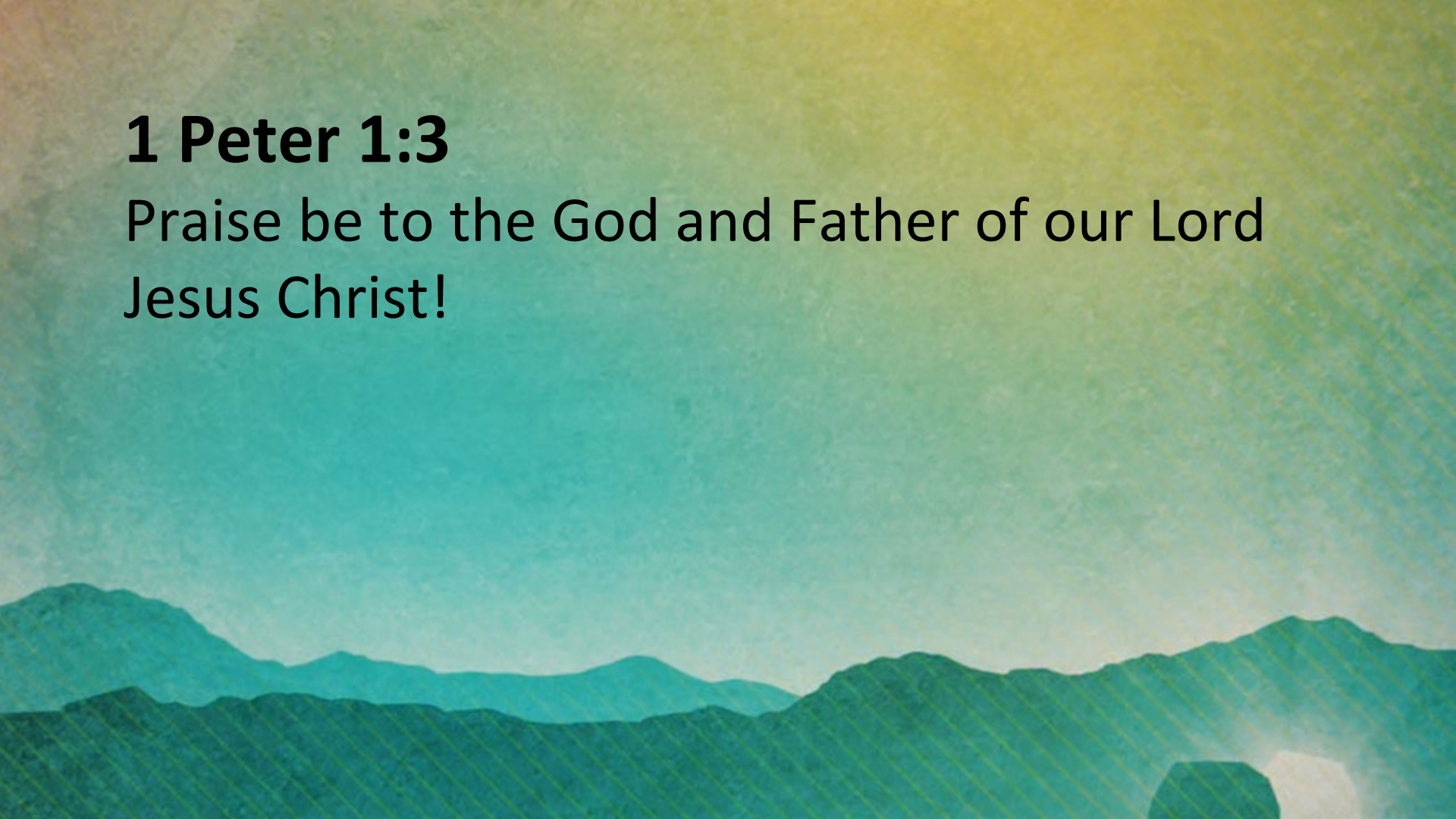


1. A New Beginning



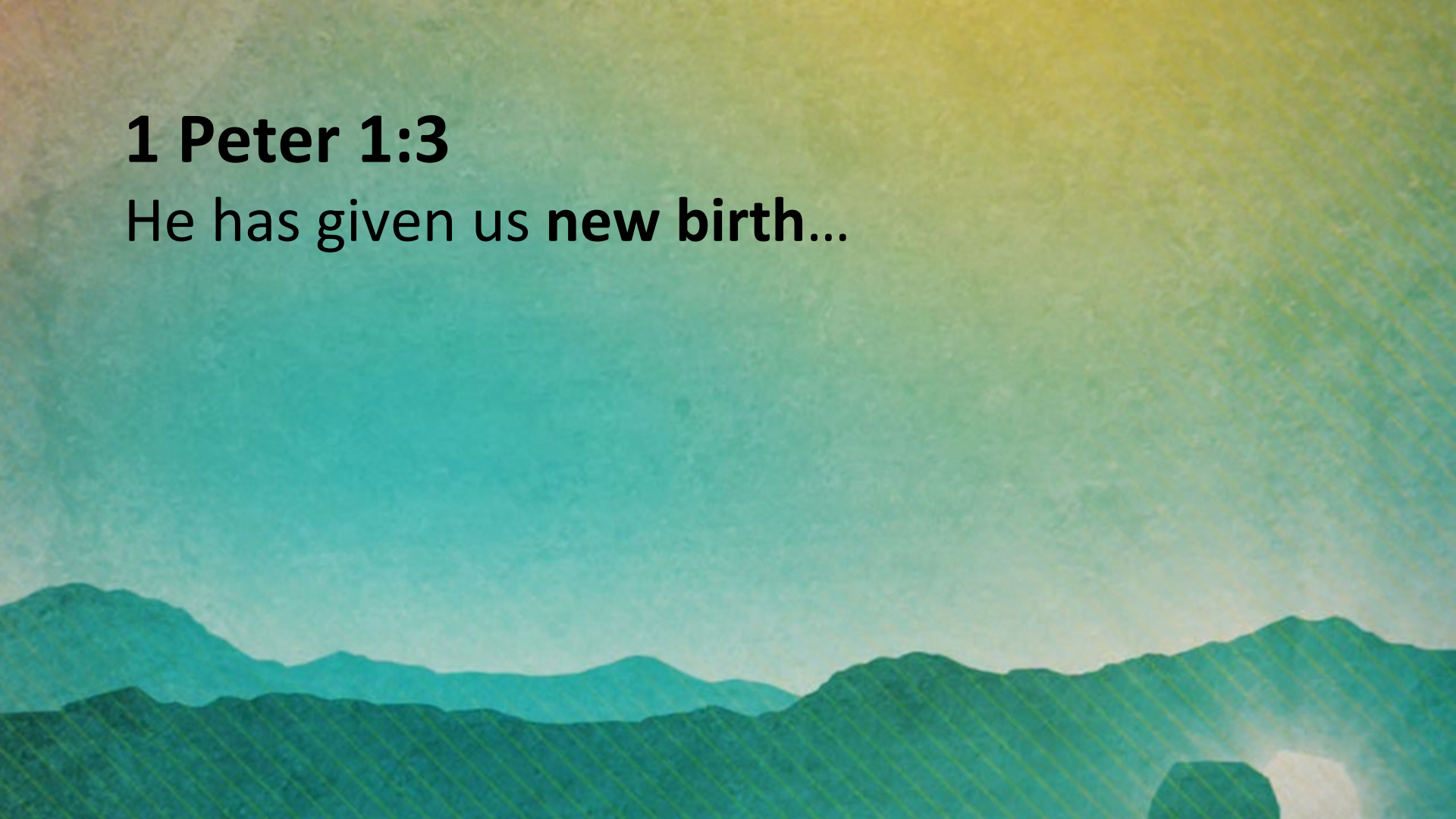
1 Peter 1:3

Praise be to the God and Father of our Lord
Jesus Christ!



1 Peter 1:3

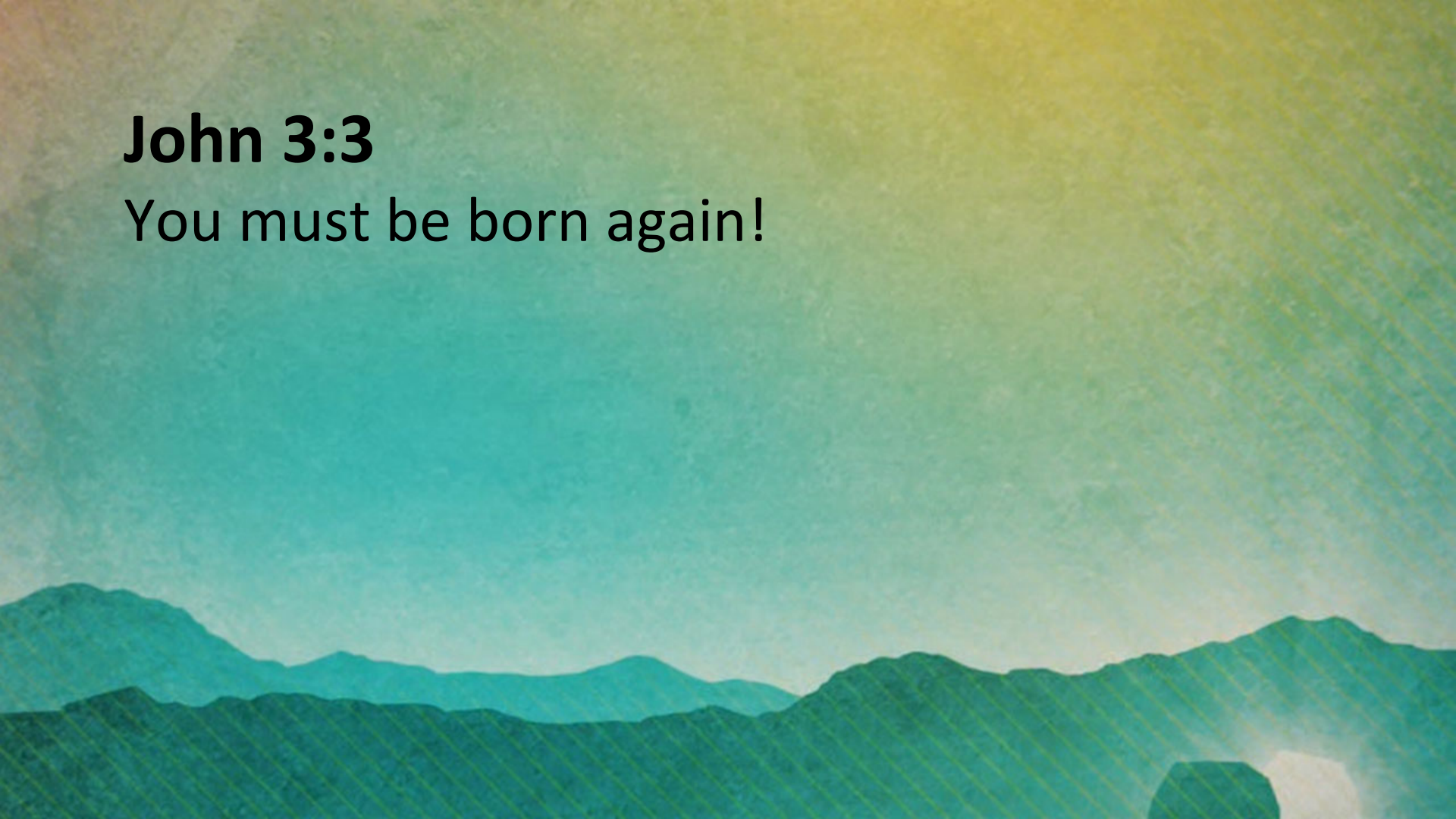
He has given us **new birth**...





John 3:3

You must be born again!





“Though no one can go back and make a brand new start, anyone can start from now and make a brand new ending.”

Carl Bard

2 Corinthians 5:17

Therefore if anyone is in Christ, he is a new creature; the old things passed away; behold, new things have come.

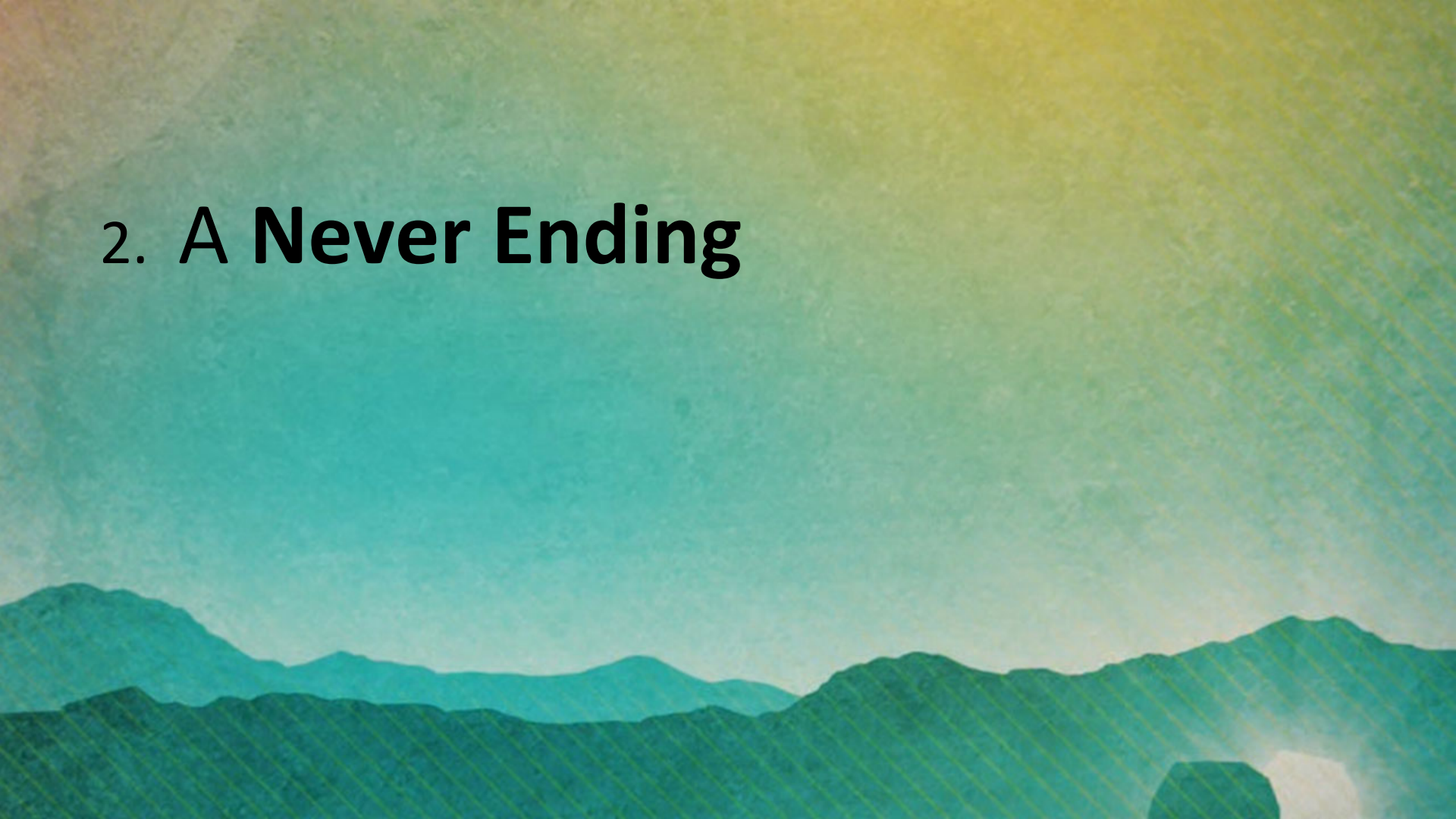




2017 Record
64 wins - 98 losses

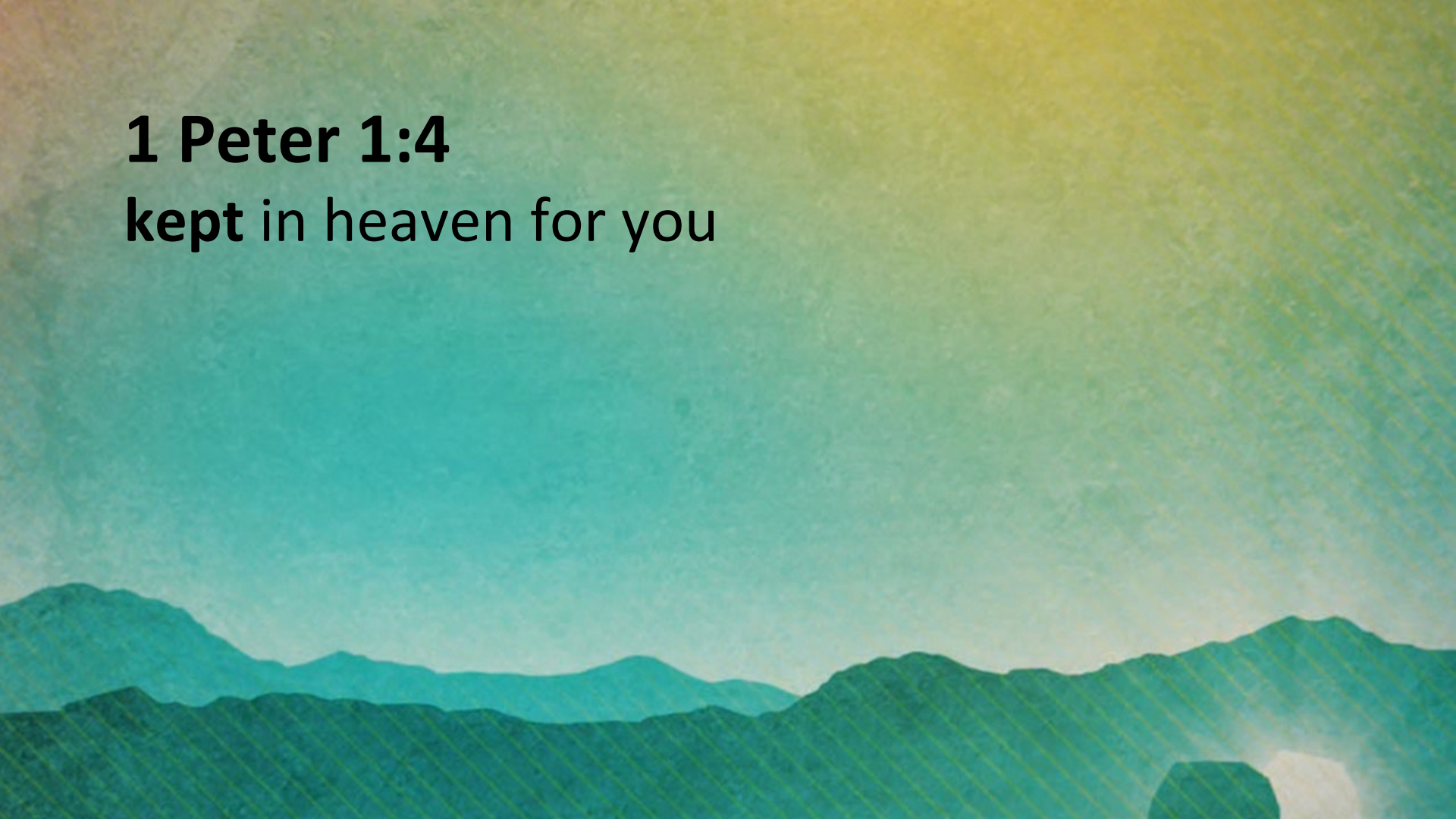


2. A Never Ending



1 Peter 1:4

kept in heaven for you



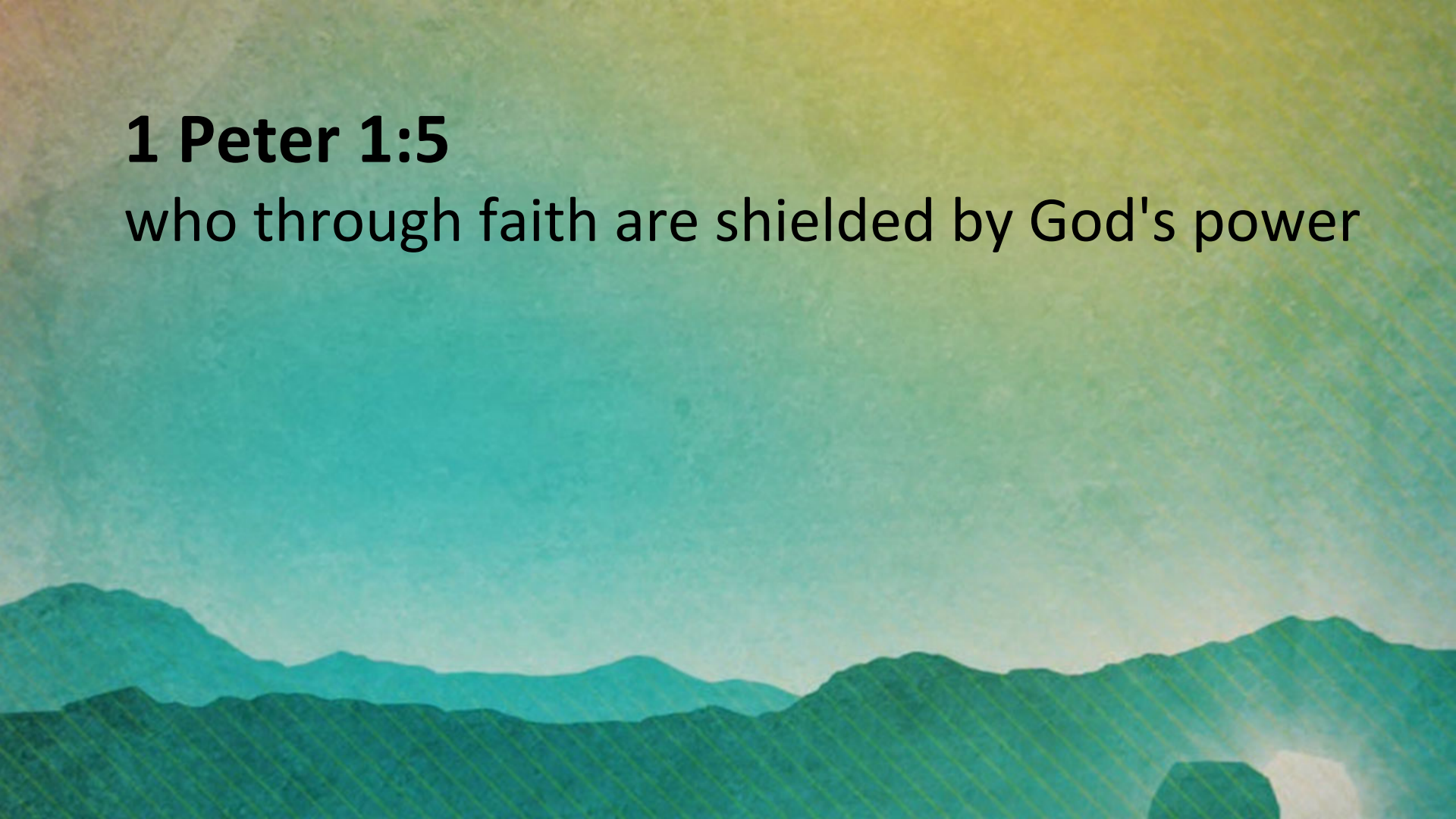
1 Peter 1:4

an inheritance that can **never** perish, spoil, or fade



1 Peter 1:5

who through faith are shielded by God's power

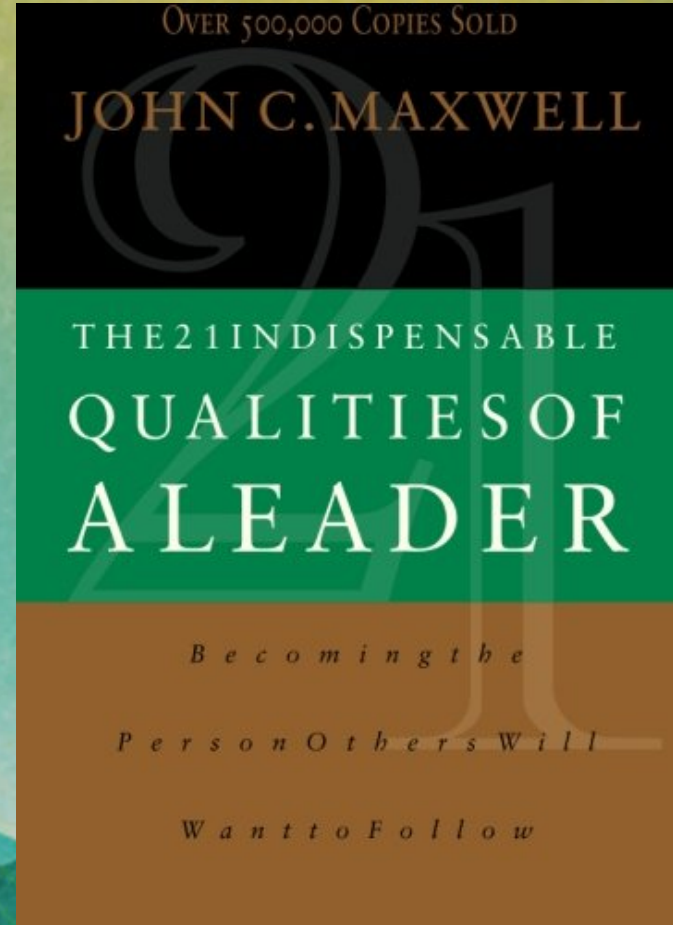




Hebrews 12:1b-2

Let us run with endurance the race that is set before us, fixing our eyes on Jesus, the author and perfecter of faith, who for the joy set before Him endured the cross, despising the shame, and has sat down at the right hand of the throne of God.





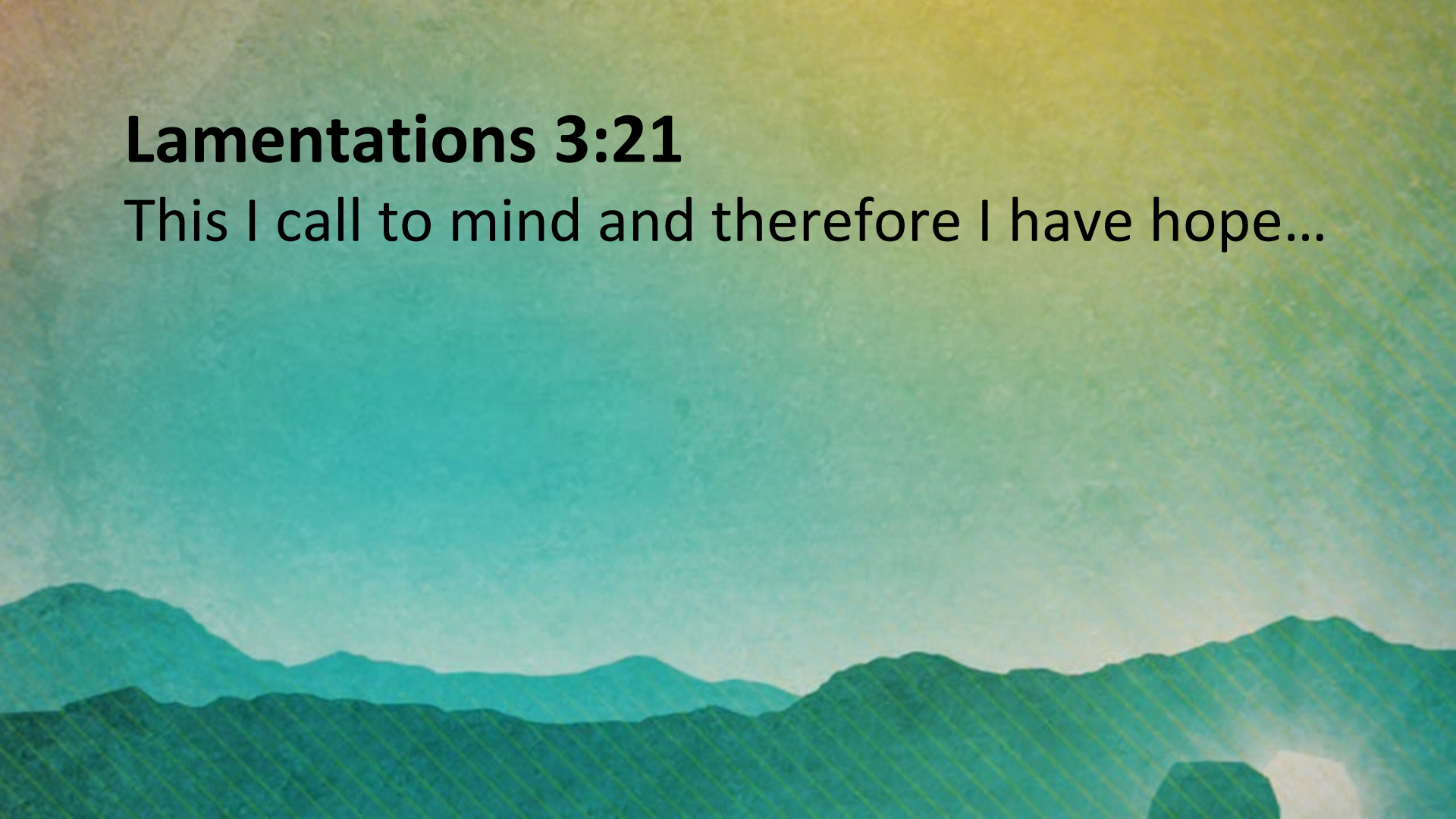
“What difference will it make
in eternity?”





Lamentations 3:21

This I call to mind and therefore I have hope...





AΩ

The Beginning and The End

Genesis 1-3

Revelation 20-22

“In the beginning
God created the
heavens and the
earth.” (1:1)

“I saw a new
heaven and a new
earth.” (21:1)

The Beginning and The End

Genesis 1-3

Revelation 20-22

“In the day you eat
of it you shall surely
die.” (2:17)

“There shall be no
more death, nor
sorrow.” (21:23)

The Beginning and The End

Genesis 1-3

Revelation 20-22

Satan appears as
the deceiver of
mankind. (3:1)

Satan disappears
forever. (20:10)

The Beginning and The End

Genesis 1-3

Revelation 20-22

Placed in a garden
where sin entered.
(3:6-7)

Inherit a city where
there will be no sin.
(21:17)

The Beginning and The End

Genesis 1-3

Revelation 20-22

Mankind's ability to
literally walk with
God is interrupted.
(3:8-10)

Mankind's ability to
literally walk with
God is restored.
(21:3)

The Beginning and The End

Genesis 1-3

Revelation 20-22

Initial triumph of
the Serpent –
Satan. (3:13)

Ultimate triumph
of the Lamb –
Jesus. (20:10; 22:3)

The Beginning and The End

Genesis 1-3

Revelation 20-22

God multiplies
sorrow and pain.
(3:16)

There will be no
more pain. (21:4)

The Beginning and The End

Genesis 1-3

Revelation 20-22

The ground is
cursed because of
sin. (3:17)

There will be no
more curse. (22:3)

The Beginning and The End

Genesis 1-3

Revelation 20-22

The first Paradise is
closed. (3:23)

The new Paradise is
opened. (21:25)

The Beginning and The End

Genesis 1-3

Revelation 20-22

Access to the Tree
of Life is lost. (3:24)

Access to the Tree
of Life is restored.
(22:14)

The Beginning and The End

Genesis 1-3

Revelation 20-22

They were driven
from God's
presence. (3:24)

They will live in
God's presence
forevermore. (22:4)





I HAVE HOPE

Pastor Dave Gudgel – “I Have Hope” – 1 Peter 1:3-5



DAVE GUDGEL

LEAD PASTOR



DAN STOCKUM

YOUNG ADULTS PASTOR

The background features a stylized landscape with layered mountain ranges in shades of teal and green. In the upper right corner, a bright yellow sun with radiating lines is partially visible. The overall aesthetic is soft and artistic.

MISSIE FENNELL

DIRECTOR OF WOMEN'S MINISTRIES



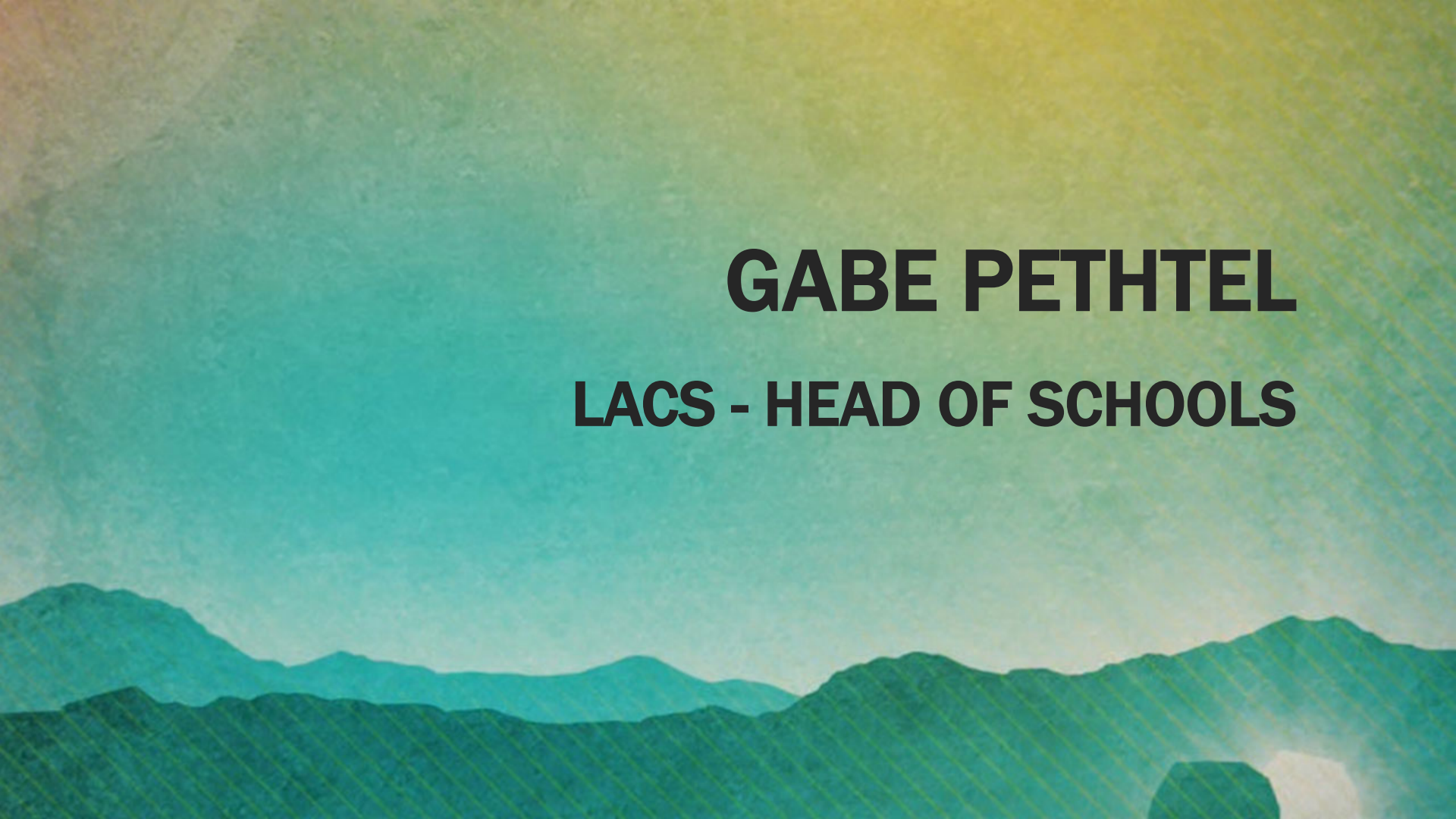
SCOTT RIKIMARU

HOST



TIM LOGAN

HOST

The background of the slide is a stylized, layered mountain landscape. The mountains are rendered in various shades of teal and green, with some peaks appearing more prominent than others. The sky above the mountains is a gradient of light green and yellow, suggesting a bright, sunny day. The overall style is artistic and modern.

GABE PETHTEL

LACS - HEAD OF SCHOOLS



CARRIE MILLER

HOST



STEVE DURAND

FAMILY PASTOR



DAVE STENFORT

HOST